

## The Standard for Construction Planning

**Touchplan** is the premier software offering of MOCA Systems, Inc. Used on the most projects, by the most users, to optimize the largest construction volume, Touchplan is the number one construction planning and analytics platform. The real-time, cloud-based solution enables the collaborative planning essential for preventing schedule and budget slippage. Touchplan also provides Owners and Contractors the instant insights they need to track progress and anticipate problems on projects.

**20% of ENR Top 400 General Contractors rely on Touchplan for their construction planning needs**

*\*Based on ENR (Engineering News-Record Magazine) 2023 Top 400 General Contractors*



### Better Collaboration

Touchplan ensures the right conversations happen between teams before, during, and after the planning process. By using the collective brain power of the whole team, your projects run smoother and quicker.

**Customers report a 50% reduction in time spent in construction planning when their teams are using Touchplan.**



### Higher Productivity

Using project analytics helps you identify where to focus attention before problems happen. The data can also fuel future planning with the transfer of lessons learned and improved thinking.

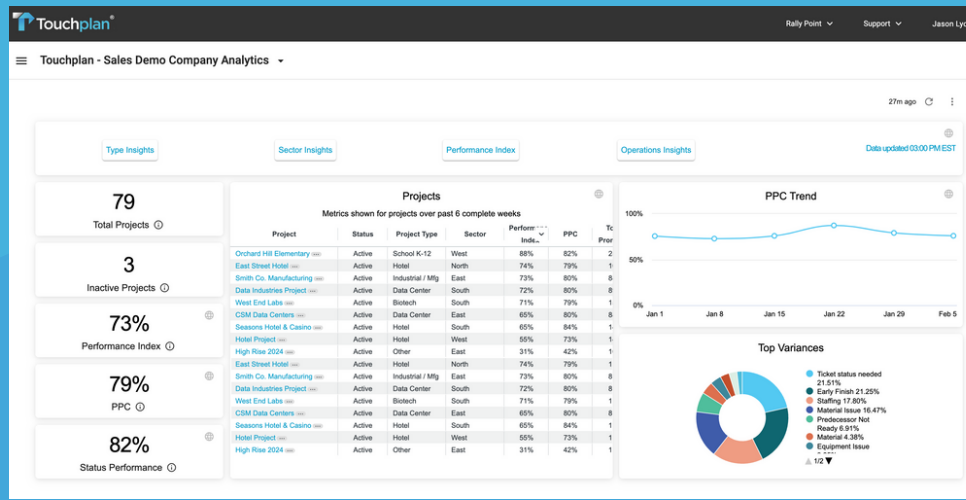
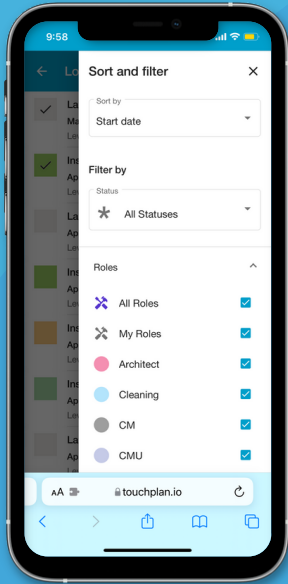
**Touchplan is the construction collaboration platform that's proven to help finish your projects 20% ahead of schedule.**

### Easy to Use

Touchplan's interface has the look and feel of sticky notes on a whiteboard, making things as easy as possible for all levels of users. Our support is always on hand to ensure a user-friendly environment and always answer any questions you may have.

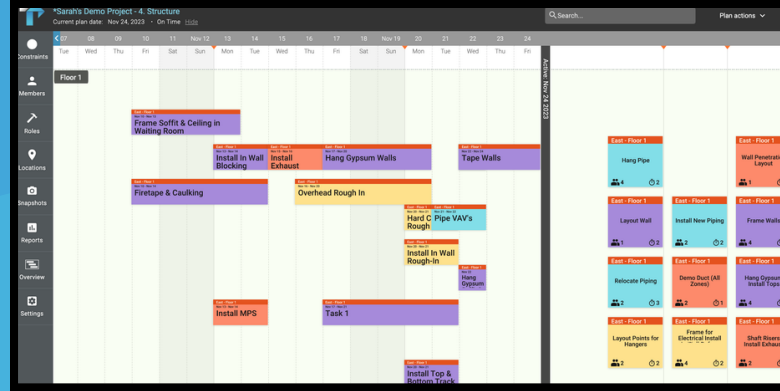


Management Analytics provides top-to-bottom alignment of project data for visibility into trend, KPI, and roadblock analytics across the entire company and its business units.



By using Touchplan’s mobile access, crews always know what daily activities they are responsible for. As a result they can keep all stakeholders updated on what’s going on in the field in real time.

Touchplan’s patented Active Line makes it easy for teams to move from long-range planning to look-ahead planning. The Active Line allows teams to establish standard, digitized planning routines, reducing the time spent manually aggregating and analyzing project data.



“Using Touchplan, we were able to onboard the subcontractors ...very quickly. Because of the user-friendly program, the subcontractors didn’t push back and noticed the benefits immediately. We ended up saving approximately 6 weeks on a 35-week project and \$25,000 of general conditions for the Owner on a project worth \$6.4M.”

- Bruce Cummings, General Manager at Cianbro